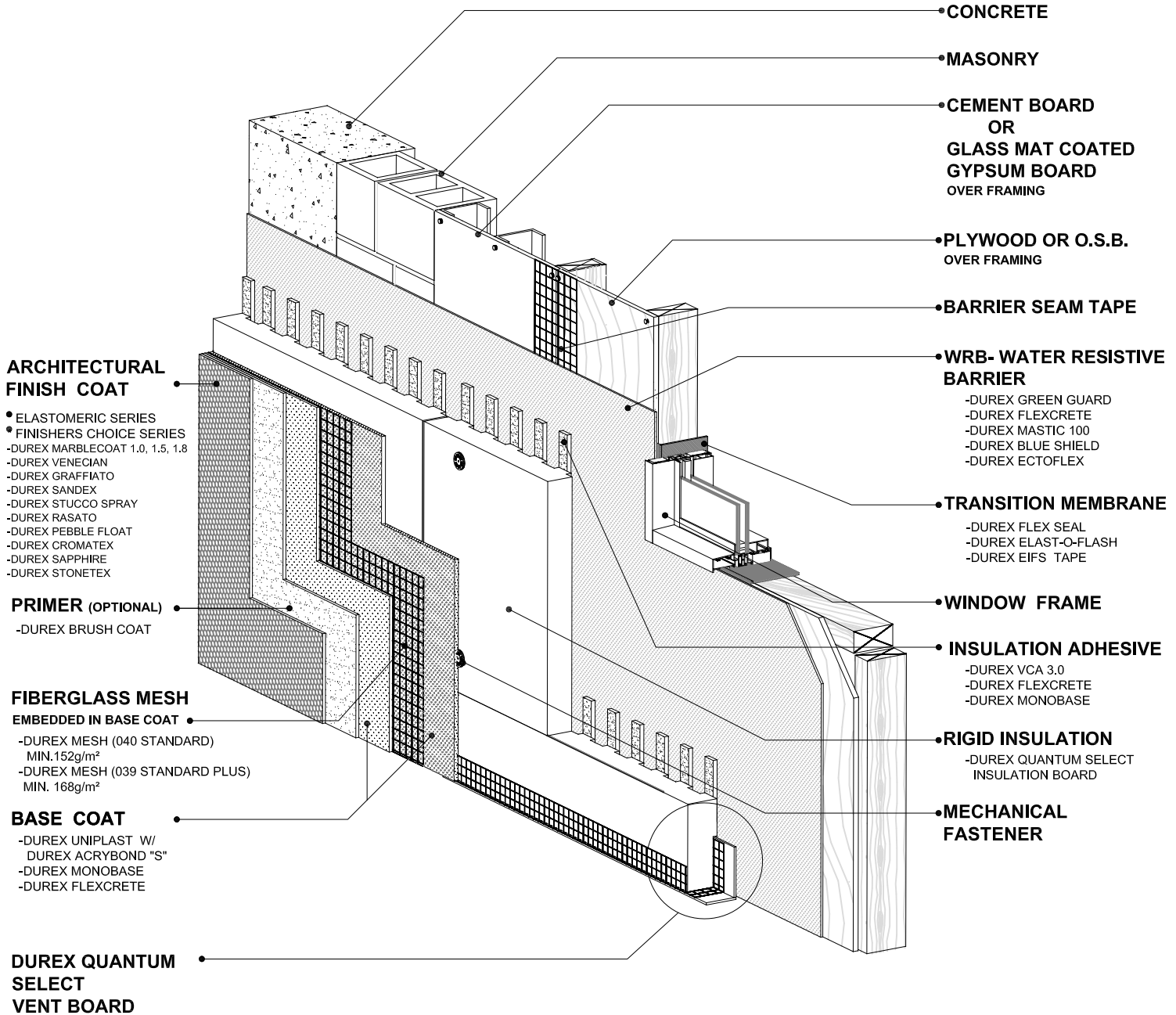


DRAINED EIFS - GEOMETRICALLY DEFINED DRAINAGE CAVITY
 NON-COMBUSTIBLE CLADDING - ULC - EW 21, ULC - EW 22
 2- HR FIRE RATED - ULC - W 456



NOTE: PLEASE CONSULT WITH YOUR DURABOND TECHNICAL REPRESENTATIVE FOR SELECTION OF THE APPROPRIATE COMPONENTS TO SUIT YOUR SPECIFIC APPLICATION.